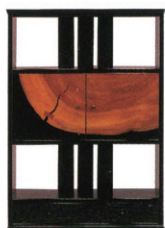
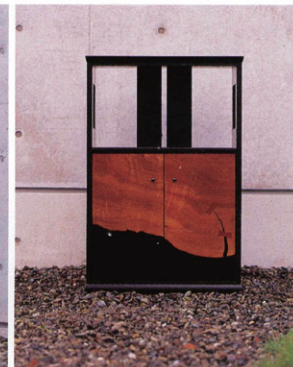
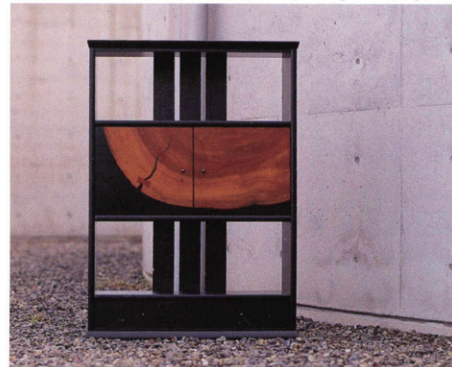


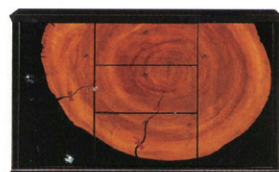
A big tree with eternal life has gained a ease and dignity from deep forest. I felt that cracks and stains on camphor trees made wonderful fascination, even though timber sellers said that they made the tree useless. I like the winding trunk which is characteristic of a big camphor trees. It would be wonderful if I could produce a ease of a forest in a living room. This production express modern form by leaving natural by cutting round a big camphor trees grow in Kyushu. You can enjoy the harmony of the soft touch of an annual ring of trees and the mellow painting like a lacquered.



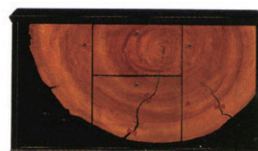
ZEN 01
W850.D350.H1200



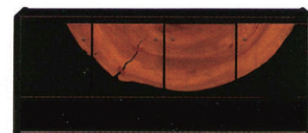
ZEN 02
W600.D300.H900



ZEN 03
W1500.D400.H900



ZEN 04
W1350.D400.H750



ZEN 05
W1600.D350.H670

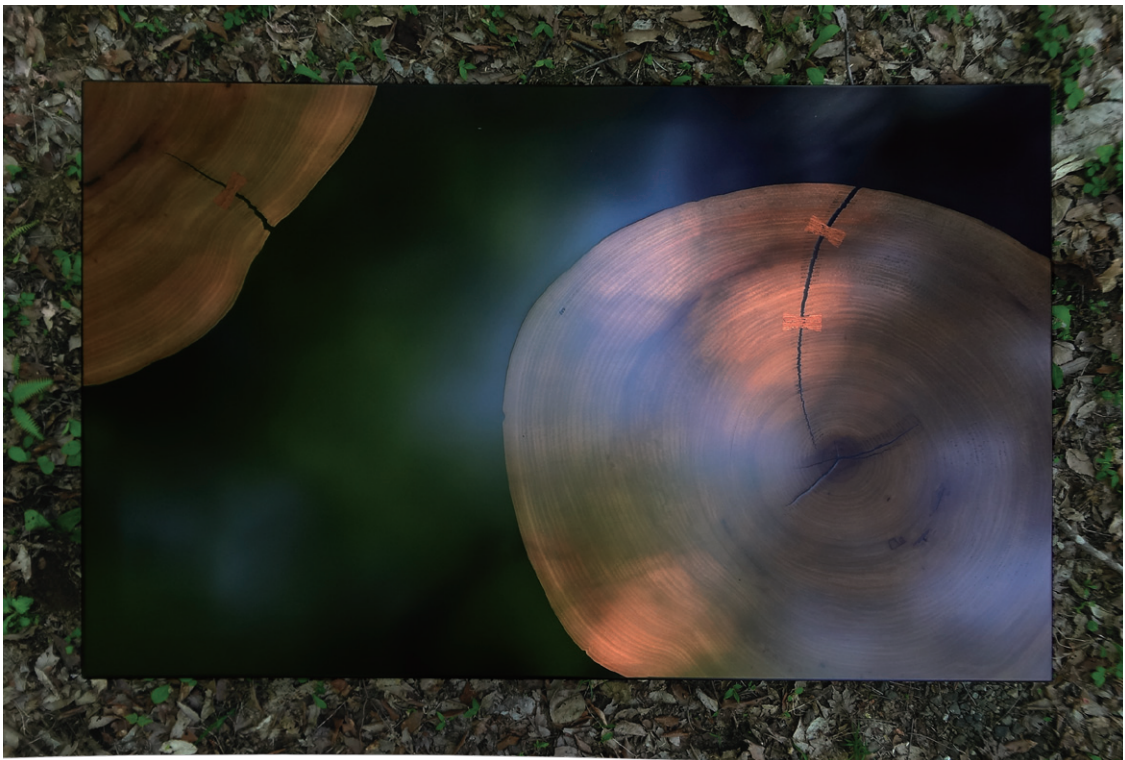
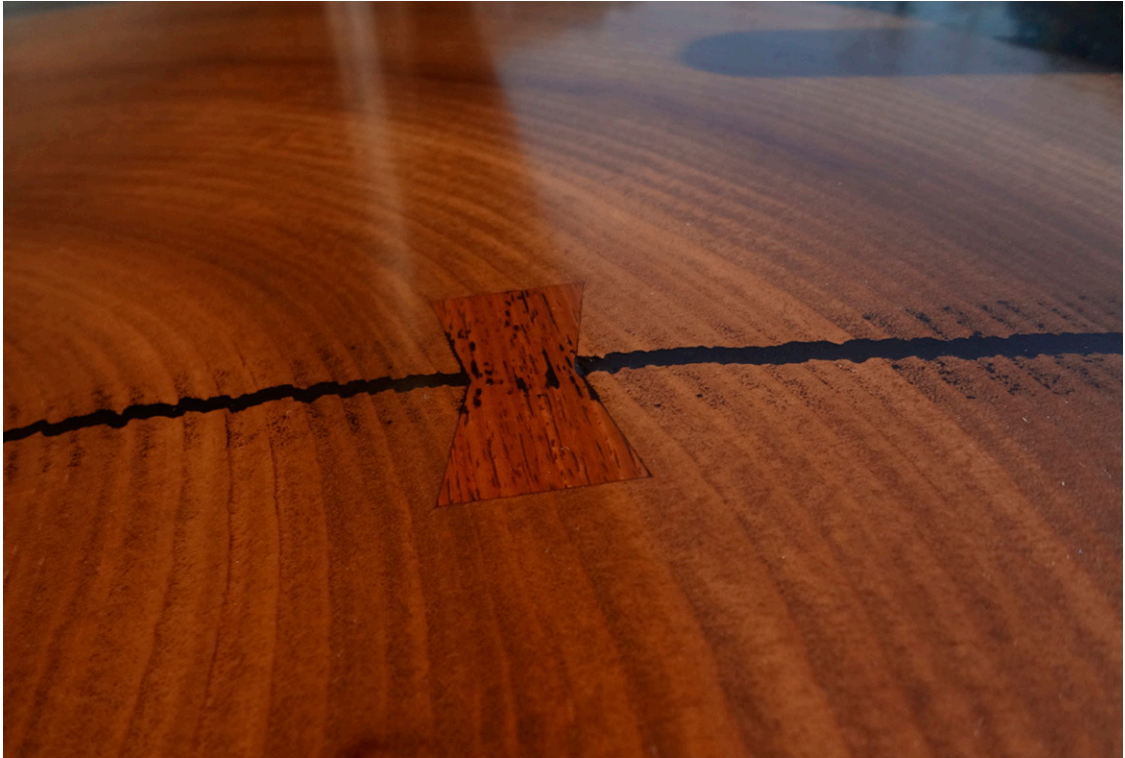


ZEN 06
W440.D350.H1737



ZEN 07 W1800.D850.H330
ZEN 08 W1500.D850.H330
ZEN 09 W1350.D850.H330
ZEN 10 W1200.D850.H330

ZEN



ZEN



& Casa by 
<http://i-kondou.com>

ZEN



ZEN color variation

